



Defense

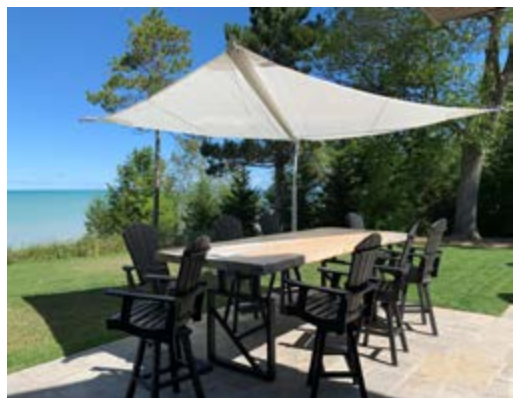
Shade Sail



Inspired by nautical engineering and constructed with marine-grade materials, this freestanding solution provides stylish solar protection. Retractable triangular sails made from UV-protected Dacron® extend from a curved stainless steel frame, combining a minimalistic yet elegant appearance.



Defense Shade Sail | Outdoor Living Solutions



DEFENSE Technical Data



FRAME



STAINLESS STEEL ONLY

FABRIC



DACRON CANVAS
WHITE ONLY

Differences in color tones may occur in this brochure due to production technique, therefore these finish images should not be used for final production specifications.

MOTORIZATION

SOMFY 535 CMO (MOTOR OVERRIDE) ONLY

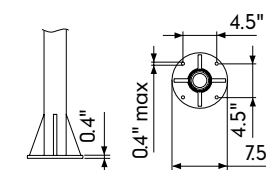
EOLIS RTS WIND SENSOR

Drawing from the aesthetics and techniques of sailing, the **Defense** features two triangular sails that extend from a horizontal mast capable of rotating 360°, providing dynamic shade control throughout the day. With motorized operation, the shade can easily project and retract at the push of a button. The system includes an anemometer that automatically retracts the fabric in high winds, plus a manual override for power outages. Installation options include an in-ground pole or a ballasted base, providing adaptable installation options for diverse settings. Supported by tensioned ropes and stainless steel arms, the Defense Shade Sail embodies a modern take on solar protection while honoring nautical craftsmanship.

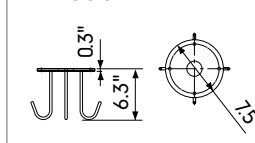
3 installation options:

Anchored to the ground is the standard solution (anchors not supplied), counter plate with prongs embedded in concrete plinth, or ballasted base with optional stainless steel cover. (Ballast blocks not supplied.)

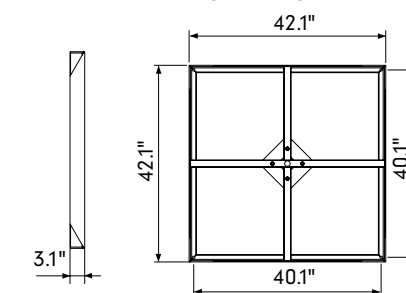
GROUND POLE



IN-GROUND COUNTER PLATE

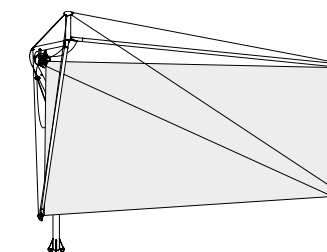


BALLASTED BASE



Features

- » SELF-SUPPORTING SHADE SAIL
- » NAUTICAL DESIGN, TECHNOLOGY & COMPONENTS
- » 3 INSTALLATION OPTIONS AVAILABLE
- » SALINITY AND WEAR RESISTANT
- » BRUSHED/POLISHED STAINLESS STEEL FINISH
- » STAINLESS STEEL CLEANING KIT PROVIDED
- » CMO OPERATION (Control Motor Override)
- » ANEMOMETER INCLUDED
- » 360° ROTATION
- » LOW MAINTENANCE



DETAILED DEFENSE MEASUREMENTS

